

- 20 Longchamp A, Longchamp J, Manzocchi Besson S, Danzer D. Trapped by the entrapment. *EJVES Vasc Forum* 2020;**49**:1–3.
- 21 Song X, Zhou M, Tang L, Liu Z, Zheng Y, Chen Y. Popliteal artery entrapment syndrome as a cause of failed treatment of a false popliteal aneurysm. *J Int Med Res* 2020;**48**:300060519868628.
- 22 Fujimura N, Hosokawa K, Obara H, Igari K, Akamatsu D, Matsumoto H, et al. Incidence, diagnosis and treatment of popliteal artery entrapment syndrome in current vascular practice in Japan. *Cardiovasc Interv Ther* 2021;**36**:506–13.
- 23 Hosaka A, Kumamaru H, Takahashi A, Azuma N, Obara H, Miyata T, et al. Nationwide study of surgery for primary infected abdominal aortic and common iliac artery aneurysms. *Br J Surg* 2021;**108**:286–95.
- 24 Miyata H, Gotoh M, Hashimoto H, Motomura N, Murakami A, Tomotaki A, et al. Challenges and prospects of a clinical database linked to the board certification system. *Surg Today* 2014;**44**:1991–9.
- 25 Kanaji S, Takahashi A, Miyata H, Marubashi S, Kakeji Y, Konno H, et al. Initial verification of data from a clinical database of gastroenterological surgery in Japan. *Surg Today* 2019;**49**:328–33.
- 26 Takahashi A, Kumamaru H, Tomotaki A, Matsumura G, Fukuchi E, Hirata Y, et al. Verification of data accuracy in Japan Congenital Cardiovascular Surgery Database including its postprocedural complication reports. *World J Pediatr Congenit Heart Surg* 2018;**9**:150–6.
- 27 Tomotaki A, Kumamaru H, Hashimoto H, Takahashi A, Ono M, Iwanaka T, et al. Evaluating the quality of data from the Japanese National Clinical Database 2011 via a comparison with regional government report data and medical charts. *Surg Today* 2019;**49**:65–71.
- 28 Rutherford RB, Baker JD, Ernst C, Johnston KW, Porter JM, Ahn S, et al. Recommended standards for reports dealing with lower extremity ischemia: revised version. *J Vasc Surg* 1997;**26**:517–38.
- 29 Hameed M, Coupland A, Davies AH. Popliteal artery entrapment syndrome: an approach to diagnosis and management. *Br J Sports Med* 2018;**52**:1073–4.
- 30 Barrett DW, Carreira J, Bowling FL, Wolowczyk L, Rogers SK. The importance of patient position when defining normal versus pathological functionality in the diagnosis of popliteal artery entrapment syndrome with duplex. *Eur J Vasc Endovasc Surg* 2023;**66**:760–1.
- 31 Lavingia KS, Dua A, Rothenberg KA, Fredericson M, Lee JT. Surgical management of functional popliteal entrapment syndrome in athletes. *J Vasc Surg* 2019;**70**:1555–62.

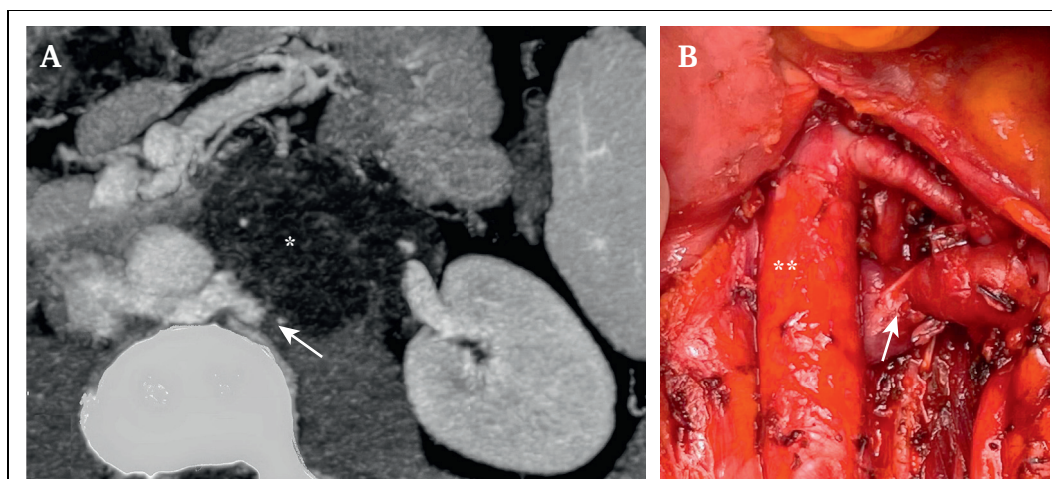
Eur J Vasc Endovasc Surg (2023) 66, 388

COUP D'OEIL

Metastatic Peri-Aortic Teratoma with Retro-Aortic Left Renal Vein Involvement: Multimodal Surgical Approach

Pietro Dioni ^{*}, Germano Melissano

IRCCS H. San Raffaele, "Vita-Salute" University, Scientific Institute H. San Raffaele, Milan, Italy



A 26 year old patient following left orchiectomy for testicular cancer and in remission after chemotherapy was discussed at a multidisciplinary oncology meeting because of a peri-aortic mass (A, asterisk). Computed tomography angiography identified retro-aortic left renal vein (LRV) that was compressed by the mass. The surgical team, including vascular surgeons and urologists, successfully removed the metastatic teratoma via midline incision and transperitoneal approach, thus relieving compression on the aorta (B, asterisks) and retro-aortic LRV (arrow). The post-operative course was uneventful.

* Corresponding author. IRCCS H. San Raffaele, "Vita-Salute" University, Scientific Institute H. San Raffaele, Via Olgettina 60, Milan 20132, Italy. E-mail address: p.dioni@studenti.univr.it (Pietro Dioni).

[@SanRaffaeleMI](https://twitter.com/SanRaffaeleMI)

1078-5884/© 2023 European Society for Vascular Surgery. Published by Elsevier B.V. All rights reserved.

<https://doi.org/10.1016/j.ejvs.2023.07.037>