

# 2.5-Year changes of connectivity dynamism are relevant for physical and cognitive deterioration in multiple sclerosis

Maria A Rocca , Giulia D'Amore, Paola Valsasina, Nicolò Tedone, Alessandro Meani  and Massimo Filippi 

## Abstract

**Background:** In MS, functional connectivity (FC) dynamism may influence disease evolution.

**Objectives:** The objective is to assess time-varying functional connectivity (TVFC) changes over time at 2.5-year follow-up in MS patients according to physical and cognitive worsening.

**Methods:** We collected 3T magnetic resonance imaging (MRI) for TVFC assessment (performed using sliding-window analysis of centrality) and clinical evaluations at baseline and 2.5-year follow-up from 28 healthy controls and 129 MS patients. Of these, 79 underwent baseline and follow-up neuropsychological assessment. At 2.5 years, physical/cognitive worsening was defined according to disability/neuropsychological score changes.

**Results:** At follow-up, 25/129 (19.3%) MS patients worsened physically and 14/79 (17.7%) worsened cognitively. At baseline, MS patients showed reduced TVFC versus controls. At 2.5-year follow-up, no TVFC changes were detected in controls. Conversely, TVFC decreased over time in parieto-temporal regions in stable MS patients and in default-mode network in worsened MS. In physically worsened MS, basal ganglia TVFC reductions were also found. Reduced TVFC over time in the putamen in physically worsened and reduced TVFC in the precuneus in cognitively worsened were significant versus stable MS.

**Discussion:** At 2.5-year follow-up, default-mode network TVFC reductions were found in worsening MS. Moreover, reduced deep gray matter TVFC characterized physically worsened patients, whereas precuneus involvement characterized cognitively worsened MS patients.

**Keywords:** Multiple sclerosis, MRI, resting-state functional MRI, time-varying functional connectivity, clinical worsening, cognitive worsening

Date received: 20 November 2023; revised: 11 January 2024; accepted: 20 January 2024.

## Introduction

Multiple sclerosis (MS) is characterized by complex pathological substrates, resulting in non-uniform clinical manifestations and variable disease progression.<sup>1</sup> Therefore, determining biomarkers associated with an unfavorable disease course is of paramount importance to optimize patients' management.

Magnetic resonance imaging (MRI)-derived measures are good candidates for identifying mechanisms associated with disability progression and cognitive deterioration. Conventional MRI often enters in disease monitoring and in evaluating disease-modifying treatment (DMT) efficacy;<sup>2</sup> however, T2-visible MRI

abnormalities can partially explain subsequent MS course just at the earliest disease stages.<sup>3–5</sup> Conversely, the association between atrophy progression and concomitant worsening of MS disability<sup>5–8</sup> and cognitive deficits<sup>8,9</sup> is more evident.

Among advanced MRI techniques, resting state (RS) functional magnetic resonance imaging (fMRI) allows to map large-scale functional networks and to establish how MS pathology impairs functional integration.<sup>10</sup> A few longitudinal RS fMRI studies put in relation RS functional connectivity (FC) changes over time with concomitant disability or cognitive worsening.<sup>11–13</sup> Faivre et al.<sup>11</sup> described an

Multiple Sclerosis Journal

2024, Vol. 30(4-5) 546–557

DOI: 10.1177/

13524585241231155

© The Author(s), 2024.



Article reuse guidelines:  
sagepub.com/journals-  
permissions

Correspondence to:

**MA Rocca**  
Neuroimaging Research Unit,  
Division of Neuroscience,  
IRCCS San Raffaele  
Scientific Institute, Via  
Olgettina, 60 – 20132 Milan,  
Italy.

rocca.mara@hsr.it

**Maria A Rocca**  
Neuroimaging Research Unit,  
Division of Neuroscience,  
IRCCS San Raffaele  
Scientific Institute, Milan,  
Italy/Neurology Unit, IRCCS  
San Raffaele Scientific  
Institute, Milan, Italy/  
Vita-Salute San Raffaele  
University, Milan, Italy

**Giulia D'Amore**  
Neuroimaging Research Unit,  
Division of Neuroscience,  
IRCCS San Raffaele  
Scientific Institute, Milan,  
Italy/Neurology Unit, IRCCS  
San Raffaele Scientific  
Institute, Milan, Italy

**Paola Valsasina**  
**Nicolò Tedone**  
**Alessandro Meani**  
Neuroimaging Research Unit,  
Division of Neuroscience,  
IRCCS San Raffaele  
Scientific Institute, Milan,  
Italy

**Massimo Filippi**  
Neuroimaging Research Unit,  
Division of Neuroscience,  
IRCCS San Raffaele  
Scientific Institute, Milan,  
Italy/Neurology Unit, IRCCS  
San Raffaele Scientific  
Institute, Milan, Italy/  
Vita-Salute San Raffaele  
University, Milan, Italy/  
Neurorehabilitation Unit,  
IRCCS San Raffaele  
Scientific Institute, Milan,  
Italy/Neurophysiology  
Service, IRCCS San Raffaele  
Scientific Institute, Milan,  
Italy

association between longitudinal RS FC decrease and clinical worsening at 2-year follow-up, suggesting maladaptive mechanisms. Conversely, Koubiyr *et al.*<sup>13</sup> found an increased coupling among structural and functional networks at 5-year follow-up in patients with clinically isolated syndromes, which was related to cognitive deterioration. Similarly, Huiskamp *et al.*<sup>12</sup> found a longitudinal increase of ventral attention network centrality in cognitively preserved MS patients transitioning to mild cognitively impaired. Such results suggest a not straightforward relationship between longitudinal RS FC changes and concomitant disease evolution, which may depend from disease stage and specific analysis methods.

Traditionally, RS FC has been quantified using data from the whole RS fMRI examination, making the hypothesis that FC is static across the whole time series. Recently, time-varying functional connectivity (TVFC)<sup>14</sup> has been introduced as a novel technique that aims at measuring variability of RS FC fluctuations during the course of RS fMRI acquisition. Since the human brain is a dynamic system continuously integrating and coordinating external and internal information, TVFC may provide additional information on intrinsic functional brain properties, complementing traditional RS FC data.<sup>15</sup> In MS patients, cross-sectional TVFC analyses showed abnormalities of sensorimotor and cognitive networks,<sup>15–18</sup> varying according to disease stage<sup>16,18</sup> and correlating with clinical disability<sup>15</sup> and cognitive impairment.<sup>12,15–17</sup> Longitudinal TVFC studies in MS are still scanty; however, preliminary evidence showed that cognitive decline at 5-year follow-up was associated with progressive TVFC instability over time.<sup>19</sup> The impact of longitudinal TVFC changes on concomitant clinical disability worsening needs further investigations, since preliminary TVFC studies focused on early MS stages presenting with minimal medium-term disability changes.<sup>18</sup>

Here, we hypothesized that TVFC analysis might provide novel insights into the functional mechanisms associated with disease progression in MS; in particular, we supposed that physical and cognitive deterioration might be associated with peculiar TVFC changes in specific brain areas. To address this, we assessed longitudinal TVFC evolution over 2.5 years of follow-up in MS patients, and we investigated specific TVFC changes characterizing MS patients presenting with physical disability progression or cognitive deterioration.

## Methods

### *Ethics committee approval*

Approval was received from the institutional ethical standards committee on human experimentation. Written informed consent was obtained from all subjects prior to study participation.

### *Patients*

We retrospectively included from our internal database consecutive MS patients, selected for having two clinical and MRI evaluations separated by a minimum follow-up of 1.5 years. Part (80%) of subjects were included in previous publications,<sup>20</sup> where data were analyzed using a static RS FC approach and follow-up MRI scans were not included. Inclusion/exclusion criteria were: (1) right handedness (five subjects discarded); (2) relapse- and steroid-free, and (3) no DMT changes for at least 3 months before both MRI scans (four subjects discarded); (4) no drug/alcohol abuse history; (5) no MRI contraindications; and (6) no neurological or systemic disorder other than MS (three subjects discarded). Right-handed healthy controls (HCs) with no history of neurological, psychiatric, or systemic disorders, who also underwent two MRI scans separated by a minimum follow-up of 1.5 years, were selected, serving as reference for structural MRI and TVFC analysis.

### *Clinical and neuropsychological assessment*

Within 2 days from both MRI examinations, MS patients underwent a neurological evaluation, with rating of the Expanded Disability Status Scale (EDSS) score<sup>21</sup> and DMT recording. Besides EDSS score rating, the follow-up neurological assessment also collected information on clinical relapse occurrence and DMT changes (binary coded). At follow-up, patients were considered as physically worsened if they had an EDSS score increase  $\geq 1.5$  when baseline EDSS was 0,  $\geq 1.0$  when baseline EDSS was between 1.0 and 5.5, or  $\geq 0.5$  when baseline EDSS was  $\geq 6.0$ .<sup>20</sup>

At baseline and follow-up, 79 MS patients underwent a neuropsychological assessment using the Brief Repeatable Battery of Neuropsychological tests<sup>22</sup> (BRBN, baseline: version A, follow-up: B). Performances were adjusted for age, sex and education and transformed into Z-scores according to the Italian normative data.<sup>23,24</sup> Then, Z-scores were averaged according to cognitive domain (i.e. verbal memory, visuo-spatial memory, information processing speed, attention, and verbal fluency); an average global cognitive Z-score was also calculated. At baseline, patients were classified as

cognitively impaired in case of failure in at least two tests ( $Z$ -score  $< -1.5$ ) in different cognitive domains.<sup>23</sup> At follow-up, MS patients were defined as cognitively worsened if they had a  $Z$ -score decrease of 0.5 in at least two cognitive domains.<sup>25</sup>

#### *MRI acquisition and structural MRI analysis*

At baseline and 2.5-year follow-up, all subjects underwent brain MRI using two 3.0T scanners (Scanner 1: Achieva,  $n=21/99$  HC/MS patients; Scanner 2: Ingenia,  $n=7/30$  HC/MS patients; cognitive sample: Scanner 1/2:  $n=56/23$  MS patients; Philips Medical Systems, Eindhoven, The Netherlands). Acquisition was performed using the same scanner at baseline and follow-up for the same subject, using the protocol described in the Supplementary methods, and included the following scans: (1) T2\*-weighted echo planar imaging sequence for RS fMRI; (2) dual-echo (DE) turbo spin echo or three-dimensional (3D) fluid-attenuated inversion recovery (FLAIR)/3D T2-weighted sequence for cross-sectional and longitudinal T2-hyperintense lesion assessment (Supplementary methods); and (3) 3D T1-weighted sequence for cross-sectional and longitudinal brain atrophy assessment (Supplementary methods).

#### *TVFC analysis*

After RS fMRI pre-processing (Supplementary methods), TVFC was assessed basing on the calculation of degree centrality,<sup>26</sup> a measure quantifying the relative importance of individual gray matter (GM) voxels over the whole-brain networks that was already used in multicenter studies of MS<sup>26</sup> and showed minor scanner-related effects, easy to be controlled using scanner-adjusted statistical models.<sup>27</sup> Using DPABI software (<http://rfmri.org/dpabi>), we splitted RS fMRI scans into sliding windows of 22 time points (Scanner 1) or 42 time points (Scanner 2), to take into account for different repetition times/acquisition lengths (but at the same time maintaining an equal window length in seconds across scanners), with a shift length of one volume across windows. Degree centrality maps were computed for each window. Then, the coefficient of variation across sliding windows of degree centrality was calculated to produce TVFC maps, taken as a measure of FC dynamism.

#### *Statistical analysis*

Analyses of demographic, clinical, and structural MRI variables were performed using SPSS software (IBM, version 26.0, Armonk, NY, USA). Demographic and

clinical characteristics of study subjects were compared between HC and MS patients using independent samples  $t$ -tests and Mann–Whitney  $U$  and chi-square tests, as appropriate. T2 lesion volume (LV) was log-transformed. Between-group comparisons of structural MRI metrics and their changes over time were performed using analysis of variance (ANOVA) and repeated-measure ANOVA models, respectively, adjusted for age, sex, and acquisition scanner. Baseline TVFC differences between MS patients and HC were investigated using SPM12 and a two-sample  $t$ -test, adjusted for age, sex, and acquisition scanner. Longitudinal TVFC changes within study groups and time-by-group interactions were tested using SPM12 and repeated-measures ANOVA models, adjusted for age, sex, and acquisition scanner. Finally, SPM12 and multiple regression models adjusted for age, sex, and acquisition scanner were used to test correlations between TVFC and clinical variables. Results were assessed at  $p < 0.05$ , cluster-wise family-wise error (FWE)<sup>28</sup> corrected and at  $p < 0.001$ , uncorrected (cluster extent  $k_E = 10$ ) for explorative purposes.

## **Results**

### *Clinical, neuropsychological, and structural MRI measures*

**Main study population.** Demographic, clinical, and structural MRI data are summarized in Table 1. We initially screened 176 subjects for inclusion; of these, 129 MS patients (103 relapsing-remitting/26 progressive MS) and 28 HCs were finally included. At baseline, age and sex were not different between MS patients and HC, while brain volumetry in all tissue compartments was significantly reduced in MS patients versus HC (Table 1).

The median follow-up duration was 2.5 years (interquartile range (IQR)=2.0–3.4 years) in MS patients and 2.7 years (IQR=2.3–2.8 years) in HC ( $p=0.15$ , Table 1). The median EDSS score at follow-up was 2.0 (IQR=1.5–4.0, median EDSS change between baseline and follow-up=0.0, IQR=-0.5 to 0.5,  $p$ -value vs baseline=0.03). At follow-up, 25/129 (19.3%) MS patients showed confirmed EDSS worsening. In patients, T2 LV significantly increased over time ( $p < 0.001$ ). In addition, they showed significantly higher annualized percentage brain volume change (PBVC) ( $p=0.007$ ) and normalized deep gray matter volume (NDGMV) change ( $p=0.002$ ) compared to HC.

Physically worsened MS patients were older ( $p=0.005$ ) and had higher baseline EDSS score ( $p < 0.001$ ), longer disease duration ( $p=0.006$ ), and

**Table 1.** Main demographic, clinical, and MRI features of patients with multiple sclerosis (MS) and healthy controls (HCs) at baseline and follow-up evaluations.

	HC ( <i>n</i> =28)	MS patients ( <i>n</i> =129)	<i>p</i>
Men/women	15/13	57/72	0.40 <sup>a</sup>
Mean age (IQR) (years), baseline	35.9 (25.9–44)	39.7 (32.4–45.9)	0.09 <sup>b</sup>
Mean disease duration (IQR) (years)	–	11.0 (3.49–16)	–
Median EDSS (IQR), baseline	–	2.0 (1.5–3.5)	–
Median EDSS (IQR), FU	–	2.0 (1.5–4.0)	–
Baseline DMT: none/first line/second line	–	21/69/39	–
DMT change: yes/no	–	32/97	–
Median FU duration (IQR) (years)	2.7 (2.3–2.8)	2.5 (2.0–3.4)	0.15 <sup>c</sup>
Mean ARR, FU (SD)	–	0.15 (0.27)	–
Mean T2 LV (SD) (mL), baseline	0.09 (0.2)	8.0 (9.4)	<0.001 <sup>d</sup>
Mean T2 LV (SD) (mL), FU	0.1 (0.3)	8.8 (10.3)	<0.001 <sup>d</sup>
Median new T2 lesions (IQR), FU	–	0 (0–1)	–
Mean NBV (SD) (mL), baseline	1575 (62)	1513 (93)	0.007 <sup>d</sup>
Mean NGMV (SD) (mL), baseline	774 (72)	729 (104)	0.03 <sup>d</sup>
Mean NWMV (SD) (mL), baseline	801 (81)	785 (71)	0.03 <sup>d</sup>
Mean NDGMV volume (SD) (mL), baseline	54.3 (3.2)	48.8 (6.3)	<0.001 <sup>d</sup>
Mean annualized PBVC (SD) (%)	0.02 (1.6)	–0.39 (0.4)	0.007 <sup>d</sup>
Mean annualized NDGMV volume change (SD) (%)	0.29 (0.3)	–0.53 (0.8)	0.002 <sup>d</sup>

IQR: interquartile range; EDSS: Expanded Disability Status Scale; FU: follow-up; DMT: disease-modifying treatment; ARR: annualized relapse rate; SD: standard deviation; LV: lesion volume; NBV: normalized brain volume; NGMV: normalized gray matter volume; NWMV: normalized white matter volume; NDGMV: normalized deep gray matter volume; PBVC: percentage brain volume change.

<sup>a</sup>Chi-square test.

<sup>b</sup>Two-sample *t*-test.

<sup>c</sup>Mann–Whitney *U*-test.

<sup>d</sup>ANOVA model adjusted for age, sex, and acquisition scanner.

higher annualized relapse rate ( $p=0.02$ ) than stable patients. Physically worsened MS patients tended to have lower baseline brain volumetry (normalized brain volume (NBV):  $p=0.01$ ; normalized gray matter volume (NGMV):  $p=0.03$ ; NDGMV:  $p=0.04$ ; normalized white matter volume (NWMV):  $p=0.10$ ) than stable patients. No differences were found between physically worsened and stable patients in terms of baseline T2 LV ( $p=0.5$ ), T2 LV increase over time ( $p=0.24$ ), number of new T2-visible lesions ( $p=0.46$ ), annualized PBVC ( $p=0.33$ ), and annualized NDGMV change ( $p=0.40$ ).

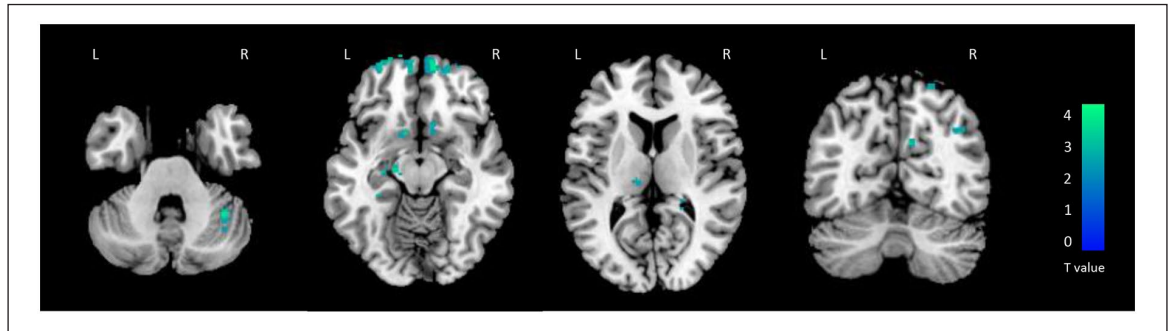
**Cognitive sample.** Seventy-nine MS patients (69 relapsing-remitting/10 progressive MS) underwent a complete neuropsychological assessment at baseline and follow-up. The main characteristics of this sub-population are described in the Supplementary results.

At baseline, 20 MS patients were cognitively impaired and 59 were cognitively preserved. At follow-up, 14/79 (17.7%) patients were classified as cognitively worsened.

### TVFC analysis

**Baseline TVFC analysis.** Results of the comparison of TVFC between MS patients and HC are outlined in Figure 1 and Table 2. At baseline, MS patients showed reduced TVFC compared to HC in the bilateral orbitofrontal cortex ( $p < 0.05$ , FWE corrected). At uncorrected threshold ( $p < 0.001$ ), they also showed a lower TVFC in the left cerebellum, right precuneus, left thalamus, right angular gyrus, and bilateral gyrus rectus. Reduced TVFC in the left orbitofrontal cortex was significantly correlated with a longer disease duration ( $r = -0.41$ ,  $p < 0.001$ ).

**Longitudinal TVFC analysis: physical worsening.** No significant TVFC changes over time were detected within HC. Results of the longitudinal TVFC changes detected within physically stable and worsened MS patients are shown in Figure 2 and Table 3. At 2.5-year follow-up, a widespread reduction of TVFC over time ( $p < 0.05$ , FWE corrected) was found within physically stable patients in temporal, parietal, occipital, and frontal lobes, as well as in the cerebellum. Within physically worsened patients,



**Figure 1.** Brain regions showing significant differences of baseline time-varying functional connectivity (TVFC) between healthy controls (HCs) and multiple sclerosis patients (SPM12 two-sample  $t$ -test adjusted for age, sex, and acquisition scanner,  $p < 0.001$  uncorrected for illustrative purposes). Decreased TVFC in MS patients compared to HC is color-coded in blue to light blue. Images are in neurological convention. L: left; R: right.

**Table 2.** Brain regions showing significant differences of baseline time-varying functional connectivity (TVFC) between healthy controls (HCs) and multiple sclerosis (MS) patients (SPM12 two-sample  $t$ -test adjusted for age, sex, and acquisition scanner,  $p < 0.001$  uncorrected, cluster extent  $k_E = 10$ ).

Comparison	Brain region	BA	MNI space coordinates (x, y, z)	T-value	$k_E$
MS patients < HC	R OFC <sup>a</sup>	11	12, 60, -12	4.62	163
	L OFC <sup>a</sup>	11	-28, 62, -12	4.38	83
	L cerebellum	–	-26, -70, -54	4.69	53
	R precuneus	23	8, -66, 28	3.84	26
	L thalamus	–	-10, -22, 8	3.56	20
	R angular gyrus	39	44, -56, 30	3.91	17
	R gyrus rectus	25	10, 16, -12	3.80	11
MS patients > HC	–	–	–	–	–

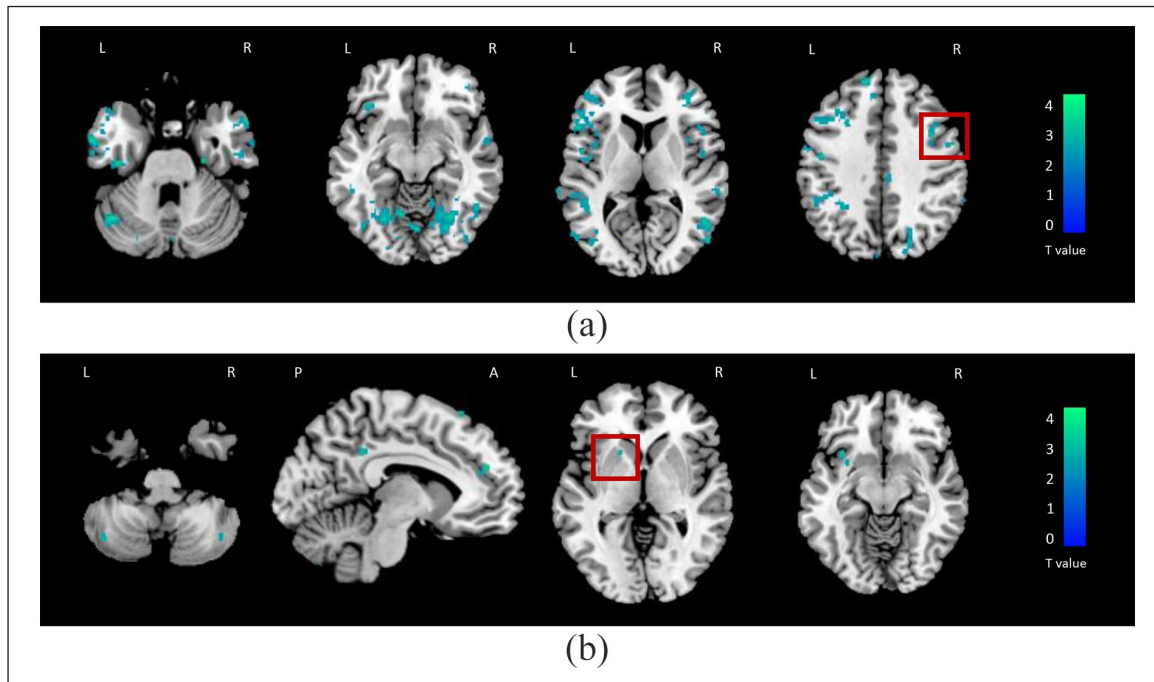
BA: Brodmann area; MNI: Montreal Neurologic Institute; MS: multiple sclerosis; HC: healthy control; OFC: orbitofrontal cortex; L: left; R: right.  
<sup>a</sup>Results surviving at  $p < 0.05$  family-wise error corrected for multiple comparisons.

peculiar TVFC reductions in bilateral cerebellum, left posterior cingulate cortex, bilateral superior and middle frontal regions, left putamen, and left insula ( $p < 0.001$ , uncorrected) were detected. Reduced TVFC in the left putamen in physically worsened compared to stable MS patients ( $k_E = 19$ ,  $p < 0.001$ ) and reduced TVFC in the right precentral gyrus in physically stable compared to worsened patients ( $k_E = 27$ ,  $p < 0.001$ ) were significant at time-by-group interaction analysis.

**Longitudinal TVFC analysis: cognitive worsening.** Results of the longitudinal changes of TVFC within cognitively stable and worsened MS patients are shown in Figure 3 and Table 4. At follow-up, a reduction of TVFC versus baseline was found within cognitively stable MS patients in the

bilateral superior occipital gyrus, left lingual cortex, right fusiform gyrus, and left superior temporal gyrus ( $p < 0.05$ , FWE corrected). At uncorrected threshold ( $p < 0.001$ ), decreased TVFC in the bilateral temporal cortex, left cuneus, bilateral superior frontal gyrus, and cerebellum was also detected within this group.

Conversely, TVFC decrease over time was found within cognitively worsened MS patients not only in the right cuneus but also in right calcarine cortex, right precuneus, left superior frontal cortex, and left lingual cortex ( $p < 0.001$ , uncorrected). Reduced TVFC in the right precuneus in cognitively worsened compared to stable MS patients was significant at time-by-group interaction analysis ( $k_E = 11$ ,  $p < 0.001$ ).



**Figure 2.** Brain regions showing significant changes of time-varying functional connectivity (TVFC) over time in physically stable (a) and in physically worsened (b) multiple sclerosis patients (SPM12 repeated-measure full-factorial model, adjusted for age, sex, and acquisition scanner,  $p < 0.001$  uncorrected). Decreased TVFC at follow-up versus baseline is color-coded in blue to light blue. Images are in neurological convention. The red boxes highlight the clusters significant at the time-by-group interaction analysis. L: left; R: right; A: anterior; P: posterior.

### Validation analyses

To better validate our data, three sensitivity analyses were performed, to test: (1) effects of “pure” physical and cognitive worsening; (2) exclusion of patients deteriorating just in one cognitive domain; and (3) scanner effects. Results from sensitivity analyses are reported in the Supplementary results and confirm the main study findings. In particular, the analysis of “pure” effects of disability and cognitive worsening confirmed a peculiar TVFC reduction over time in the right precuneus within the “pure” cognitively worsening group, and a peculiar TVFC reduction over time in the left putamen within the “pure” physically worsening group, even if these findings were observed at a more liberal threshold compared to that used in the main analysis.

### Discussion

Here, we explored changes over time of network connectivity dynamism in MS patients and their association with concomitant worsening of physical and cognitive deterioration. In general, MS patients were characterized by decreased TVFC over 2.5-year follow-up. However, while stable MS patients presented

TVFC reductions predominantly in sensorimotor and associative cortices, physically and cognitively worsening MS patients exhibited reduced TVFC over time in default-mode network regions. In addition, the time-by-group interaction analysis indicated a specific link of physical disability worsening with decreased TVFC of the left putamen, while the same analysis indicated a link of cognitive deterioration with decreased TVFC of the right precuneus.

Baseline TVFC analysis showed that MS patients had decreased TVFC versus HC in bilateral orbitofrontal, parietal, cerebellar, and thalamic regions. This is not the first study detecting a decreased connectivity dynamism in MS compared to HC, especially in frontal<sup>16,17,29</sup> and parietal<sup>16,17</sup> lobes, as well as in the cerebellum and in subcortical nuclei.<sup>16</sup> This finding is likely to indicate a disease-induced loss of flexibility in functional brain interactions, leading to impaired efficiency in information exchange between distant brain areas, especially those related to sensorimotor and associative functions. Of note, cross-sectional TVFC abnormalities detected by previous studies were generally characterized by concomitant TVFC increases and reductions,<sup>15,16,18,30</sup> which was not the

**Table 3.** Brain regions showing significant changes of time-varying functional connectivity (TVFC) over time within physically stable and worsened multiple sclerosis (MS) patients at 2.5-year follow-up (SPM12 repeated-measures full-factorial model, adjusted for age, sex, and acquisition scanner,  $p < 0.001$  uncorrected, cluster extent  $k_E = 10$ ).

Comparison	Brain region	BA	MNI space coordinates (x, y, z)	T-value	$k_E$
Physically stable MS patients: follow-up < baseline	L cerebellum crus I <sup>a</sup>	–	–42, –62, –30	5.52	87
	L MOG <sup>a</sup>	19	–28, –74, 26	5.38	257
	L SFG <sup>a</sup>	9	–12, 48, 38	5.23	96
	R ITG <sup>a</sup>	–	62, –6, –32	4.96	599
	L ITG <sup>a</sup>	20	–56, –4, –28	4.89	84
	R MTG <sup>a</sup>	37	52, –58, 6	4.67	170
	L MTG <sup>a</sup>	21	–58, –26, 2	4.58	205
	L IFG <sup>a</sup>	48	–44, 10, 16	4.58	967
	L cuneus <sup>a</sup>	18	–4, –80, 28	4.53	153
	L IOG <sup>a</sup>	18	–24, –88, –6	4.50	114
	L SOG <sup>a</sup>	18	–18, –92, 28	4.23	77
	R precuneus <sup>a</sup>	–	6, –40, 58	4.17	97
	L supramarginal gyrus <sup>a</sup>	48	–46, –46, 30	5.39	229
	R precentral gyrus	<b>6</b>	<b>52, –2, 44</b>	<b>5.01</b>	<b>44</b>
	R MFG	48	30, 32, 28	4.52	48
	R IOG	19	42, –87, 0	4.28	67
	L insula	48	–38, 6, 10	4.24	50
	R insula	48	34, 10, 12	4.16	36
	R IPG	–	60, –48, 46	3.96	26
Physically stable MS patients: follow-up > baseline	–	–	–	–	–
Physically worsened MS patients: follow-up < baseline	L cerebellum crus I	–	–30, –64, –36	4.39	40
	R cerebellum crus II	–	42, –64, –46	4.02	16
	L insula	48	–32, 16, –16	4.25	36
	B medial SFG	9	–2, 48, 46	4.24	38
		9	6, 44, 48	3.79	38
	L MFG	8	–32, 20, 50	4.20	38
		8	–30, 26, 56	4.12	38
	R SFG	10	16, 62, 10	3.63	10
	L PCC	23	–6, –42, 36	4.03	16
L putamen	<b>11</b>	<b>–16, 16, –2</b>	<b>3.69</b>	<b>11</b>	
Physically worsened MS patients: follow-up > baseline	–	–	–	–	–

BA: Brodmann area; MNI: Montreal Neurologic Institute; MS: multiple sclerosis; MOG: middle occipital gyrus; SFG: superior frontal gyrus; ITG: inferior temporal gyrus; MTG: middle temporal gyrus; IFG: inferior frontal gyrus; IOG: inferior occipital gyrus; SOG: superior occipital gyrus; MFG: middle frontal gyrus; IPG: inferior parietal gyrus; PCC: posterior cingulate cortex; L: left; R: right; B: bilateral.

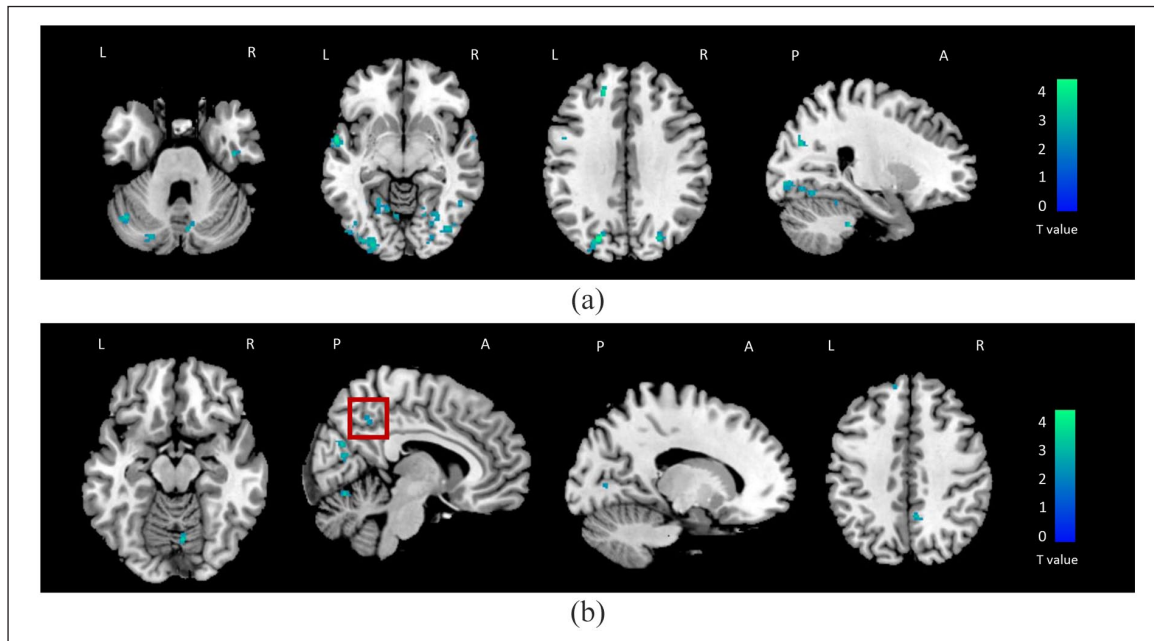
Clusters reported in bold are significant at the time-by-group interaction analysis.

<sup>a</sup>Results surviving at  $p < 0.05$  family-wise error corrected for multiple comparisons.

case of our study. The variety of approaches used to assess TVFC<sup>15</sup> and the investigation of different disease phases are both likely to have a role in explaining such heterogeneity of findings.<sup>16,18,29</sup>

The most novel part of our study was the longitudinal TVFC assessment, which was the topic of only a few

previous investigations<sup>18,19</sup> putting such changes in relationship with physical and cognitive deterioration. The first result we would like to highlight is that TVFC tended to decrease at 2.5-year follow-up both within stable and worsened MS patients, although brain regions involved by such a decrease differed. While stable patients mainly showed TVFC decrease over time in



**Figure 3.** Brain regions showing significant changes of time-varying functional connectivity (TVFC) over time in cognitively stable (a) and in cognitively worsened (b) multiple sclerosis patients (SPM12 repeated-measure full-factorial model, adjusted for age, sex, and acquisition scanner,  $p < 0.001$  uncorrected). Decreased TVFC at follow-up versus baseline is color-coded in blue to light blue. Images are in neurological convention. The red box highlights the cluster significant at the time-by-group interaction analysis. L: left; R: right; A: anterior; P: posterior.

sensorimotor and associative regions, physically and cognitively worsening patients exhibited TVFC decrease in regions of the default-mode network and deep GM. Taken together, these results suggest that in our entire cohort RS FC is going toward a more static, less flexible configuration, suggesting that information exchange within and across different functionally specialized brain systems is progressively hampered over time. However, not all TVFC decreases are necessarily detrimental: only those occurring in critical networks (such as the default-mode network) are likely to have an impact on MS deterioration. Indeed, the default-mode network is one of the most important brain networks, being consistently altered in MS patients.<sup>10</sup> From a dynamic point of view, such a network is thought to have a central role in linking new external information to previously acquired data and in facilitating information exchange with other high-order networks, such as the fronto-parietal and the central executive networks.<sup>10</sup> It is therefore conceivable that a TVFC decrease localized in the default-mode network has a major impact on MS disease worsening. This is also supported by findings from another recent longitudinal study, which used static RS FC and found default-mode network dysfunction in intact MS converting to cognitively impaired MS patients.<sup>12</sup>

With this regard, it is interesting to note that our findings related to cognitive worsening indicate a peculiar

TVFC reduction at time-by-group interaction analysis in the right precuneus, which is once again a central node of the default-mode network. The precuneus has a major role in a wide spectrum of integrated tasks (e.g. visuo-spatial imagery, episodic memory retrieval, self-processing, and consciousness).<sup>31</sup> Previous RS FC studies consistently showed that the default-mode network gets stuck in a more central<sup>26,32</sup> and less dynamic state<sup>12,17</sup> in cognitively impaired MS patients. In addition, abnormal TVFC of the precuneus was previously shown to have a role in explaining cognitive performance of patients with neuromyelitis optica spectrum disorder.<sup>33</sup> This is probably explained by the high-energy consumption of the posterior parietal cortex, creating a hypoxic environment which in turn might promote neurodegeneration and worsening of cognitive performances.

Our results seem to be partly in contradiction with one recent report,<sup>19</sup> which found a more unstable network organization in cognitively declining MS patients at 5-year follow-up. Notably, such a study had a longer follow-up duration than our study, and it used a different methodological TVFC approach. More specifically, the network flexibility parameter found to be increased at follow-up versus baseline was cohesion, that is, the number of mutual switches between sub-networks, while the number of independent switches



**Table 4.** Brain regions showing significant changes of time-varying functional connectivity (TVFC) over time in cognitively stable and worsened multiple sclerosis (MS) patients at 2.5-year follow-up (SPM12 repeated-measures full-factorial model, adjusted for age, sex and acquisition scanner,  $p < 0.001$  uncorrected, cluster extent  $k_E = 10$ ).

Comparison	Brain region	BA	MNI space coordinates (x, y, z)	T-value	$k_E$	
Cognitively stable MS patients: follow-up < baseline	L SOG <sup>a</sup>	19	-22, -76, 32	5.35	147	
	L lingual gyrus <sup>a</sup>	19	-34, -88, -16	4.53	194	
	R SOG <sup>a</sup>	19	26, -74, 28	4.47	71	
	R FFG <sup>a</sup>	19	28, -64, -10	4.20	88	
	L STG <sup>a</sup>		48	-50, -28, 16	4.19	107
			48	-52, -28, 14	4.13	87
	R ITG	20	52, 10, -40	4.33	24	
	L cerebellum crus I	-	-42, -64, -30	4.45	60	
	R cerebellum lob VI	-	-18, -72, -16	3.91	50	
	L cuneus	18	-4, -82, 28	4.22	64	
	R STG	21	62, -32, 6	4.11	12	
	R SFG	11	14, 36, -20	4.07	17	
	L SFG	11	-10, 34, -12	3.94	17	
	Cognitively stable MS patients: follow-up > baseline	-	-	-	-	-
Cognitively worsened MS patients: follow-up < baseline	R cuneus	18	8, -72, 24	5.1	43	
	R calcarine cortex	17	6, -72, 14	3.77	43	
	R precuneus	<b>7</b>	<b>6, -52, 42</b>	<b>3.94</b>	16	
	L SFG	9	-12, 48, 40	3.98	10	
	L lingual gyrus	18	-18, -72, 0	3.81	12	
Cognitively worsened MS patients: follow-up > baseline	-	-	-	-	-	

BA: Brodmann area; MNI: Montreal Neurologic Institute; MS: multiple sclerosis; SOG: superior occipital gyrus; FFG: fusiform gyrus; STG: superior temporal gyrus; ITG: inferior temporal gyrus; SFG: superior frontal gyrus; L: left; R: right. Clusters reported in bold are significant at the time-by-group interaction analysis.  
<sup>a</sup>Results surviving at  $p < 0.05$  family-wise error corrected for multiple comparisons.

was not increased.<sup>19</sup> This seems to indicate that sub-network configuration was more “fragmented” at follow-up versus baseline, but groups of nodes had a more “fixed” membership in the same subnetworks, in turn suggesting a not straightforward increase of RS FC dynamism. Another possible explanation of such discrepancies might be the intrinsically limited temporal resolution of RS fMRI scans, which probably hampers precise investigations of brain connectivity dynamism.<sup>34</sup> Future studies complementing RS fMRI with electrophysiological data may allow more reliable inspections of TVFC reorganization.

With regard to physical worsening, the time-by-group interaction analysis highlighted a specific effect of decreased TVFC of the putamen. This deep GM nucleus is primarily engaged in motor control, but it has also some role in motor learning, executive functions, behavior, and emotion.<sup>35</sup> Deep GM damage is known to be severe and extensive in MS patients; in

particular, deep GM atrophy was found to be increasing especially in patients presenting with clinical worsening;<sup>5</sup> moreover, atrophy rate of the putamen was found to be the highest among the other nuclei.<sup>5</sup> In light of this, we can suppose that structural and functional changes of deep GM are particularly relevant for disability accumulation and that they represent useful metrics for monitoring clinical disease progression.

We do acknowledge that this study is not without limitations. First, MRI was performed using two different 3.0T scanners. However, the same scanner was used at baseline and follow-up for the same subject, and all MRI statistical analyses were adjusted for scanner. Second, TVFC abnormalities localized in the orbito-frontal cortex should be interpreted with caution, since RS fMRI acquisitions are characterized by distortions in this region. Third, the sample of cognitively and physically worsened MS patients was relatively small,

probably because of the short follow-up duration; a lack of statistical power might explain why we observed limited within-group TVFC changes in worsening MS patients. A larger sample size (obtained, e.g., in future multicenter studies) and longer follow-up would be needed to increase the statistical power and confirm or expand our results. Fourth, the definition of cognitive worsening over time was chosen in agreement with the recent work of Dong *et al.*,<sup>25</sup> basing on a cohort having similar follow-up duration. However, there is still no general consensus on methods for assessing cognitive decline in MS studies, and it is possible that different thresholds and approaches may lead to bigger/smaller numbers of cognitively worsening patients. Also, despite we tried to mitigate learning effects using two different versions of the BRB-N battery, we cannot exclude that practice effects are still present in our data, since a cognitive evaluation for HC was not available. Finally, larger and more comprehensive studies including additional functional and microstructural MRI metrics, as well as genetic, environmental, and biological data, would be necessary.

To conclude, we observed reduced TVFC of the default-mode network in physically and cognitively worsened patients at 2.5-year follow-up, while stable MS patients presented decreased TVFC especially in sensorimotor and associative areas of the occipital, parietal and temporal lobes. Reduced connectivity dynamism in deep GM characterized physically worsened patients, while precuneus involvement was the peculiar finding in cognitively worsened MS patients. Centrality dynamics reductions in deep GM and precuneal regions may represent useful metrics to predict and monitor cognitive and clinical disability accumulation in this condition.

#### Data Availability Statement

The anonymised data set used and analyzed during this study is available from the corresponding author upon reasonable request.

#### Declaration of Conflicting Interests


The author(s) declared the following potential conflicts of interest with respect to the research, authorship, and/or publication of this article: M.A.R. received consulting fees from Biogen, Bristol-Myers Squibb, Eli Lilly, Janssen, and Roche and speaker honoraria from AstraZeneca, Biogen, Bristol-Myers Squibb, Bromatech, Celgene, Genzyme, Horizon Therapeutics Italy, Merck Serono SpA, Novartis, Roche, Sanofi, and Teva. She receives research support from the MS Society of Canada, the Italian Ministry of Health, the Italian Ministry of University

and Research, and Fondazione Italiana Sclerosi Multipla. She is Associate Editor for Multiple Sclerosis and Related Disorders. G.D.A., A.M., and N.T. have nothing to disclose. P.V. received speakers' honoraria from Biogen Idec. M.F. is Editor-in-Chief of the Journal of Neurology, Associate Editor of Human Brain Mapping, Neurological Sciences, and Radiology; received compensation for consulting services from Alexion, Almirall, Biogen, Merck, Novartis, Roche, Sanofi; speaking activities from Bayer, Biogen, Celgene, Chiesi Italia SpA, Eli Lilly, Genzyme, Janssen, Merck Serono, Neopharmed Gentili, Novartis, Novo Nordisk, Roche, Sanofi, Takeda, and TEVA; participation in Advisory Boards for Alexion, Biogen, Bristol-Myers Squibb, Merck, Novartis, Roche, Sanofi, Sanofi-Aventis, Sanofi-Genzyme, Takeda; scientific direction of educational events for Biogen, Merck, Roche, Celgene, Bristol-Myers Squibb, Lilly, Novartis, Sanofi-Genzyme; and he receives research support from Biogen Idec, Merck Serono, Novartis, Roche, Italian Ministry of Health, the Italian Ministry of University and Research, and Fondazione Italiana Sclerosi Multipla.

#### Funding

The author(s) received no financial support for the research, authorship, and/or publication of this article.

#### ORCID iDs

Maria A Rocca  <https://orcid.org/0000-0003-2358-4320>

Alessandro Meani  <https://orcid.org/0000-0001-8189-0452>

Massimo Filippi  <https://orcid.org/0000-0002-5485-0479>

#### Supplemental Material

Supplemental material for this article is available online.

#### References

1. Filippi M, Bar-Or A, Piehl F, *et al.* Multiple sclerosis. *Nat Rev Dis Primers* 2018; 4: 43.
2. Tiu VE, Enache I, Panea CA, *et al.* Predictive MRI biomarkers in MS—A critical review. *Medicina* 2022; 58: 377.
3. Brownlee WJ, Altmann DR, Prados F, *et al.* Early imaging predictors of long-term outcomes in relapse-onset multiple sclerosis. *Brain* 2019; 142: 2276–2287.
4. Fisniku LK, Brex PA, Altmann DR, *et al.* Disability and T2 MRI lesions: A 20-year follow-up of patients with relapse onset of multiple sclerosis. *Brain* 2008; 131(Pt. 3): 808–817.

5. Eshaghi A, Prados F, Brownlee WJ, et al. Deep gray matter volume loss drives disability worsening in multiple sclerosis. *Ann Neurol* 2018; 83(2): 210–222.
6. Cole JH, Raffel J, Friede T, et al. Longitudinal assessment of multiple sclerosis with the brain-age paradigm. *Ann Neurol* 2020; 88(1): 93–105.
7. Rocca MA, Valsasina P, Meani A, et al. Association of gray matter atrophy patterns with clinical phenotype and progression in multiple sclerosis. *Neurology* 2021; 96: e1561–e1573.
8. Preziosa P, Pagani E, Mesaros S, et al. Progression of regional atrophy in the left hemisphere contributes to clinical and cognitive deterioration in multiple sclerosis: A 5-year study. *Hum Brain Mapp* 2017; 38(11): 5648–5665.
9. Rocca MA, Riccitelli GC, Meani A, et al. Cognitive reserve, cognition, and regional brain damage in MS: A 2-year longitudinal study. *Mult Scler* 2019; 25(3): 372–381.
10. Rocca MA, Schoonheim MM, Valsasina P, et al. Task- and resting-state fMRI studies in multiple sclerosis: From regions to systems and time-varying analysis. *Neuroimage Clin* 2022; 35: 103076.
11. Faivre A, Robinet E, Guye M, et al. Depletion of brain functional connectivity enhancement leads to disability progression in multiple sclerosis: A longitudinal resting-state fMRI study. *Mult Scler* 2016; 22(13): 1695–1708.
12. Huiskamp M, Eijlers AJC, Broeders TAA, et al. Longitudinal network changes and conversion to cognitive impairment in multiple sclerosis. *Neurology* 2021; 97: e794–e802.
13. Koubiyr I, Deloire M, Brochet B, et al. Structural constraints of functional connectivity drive cognitive impairment in the early stages of multiple sclerosis. *Mult Scler* 2021; 27(4): 559–567.
14. Calhoun VD, Miller R, Pearlson G, et al. The chronnectome: Time-varying connectivity networks as the next frontier in fMRI data discovery. *Neuron* 2014; 84: 262–274.
15. Valsasina P, Hidalgo de la Cruz M, Filippi M, et al. Characterizing rapid fluctuations of resting state functional connectivity in demyelinating, neurodegenerative, and psychiatric conditions: From static to time-varying analysis. *Front Neurosci* 2019; 13: 618.
16. Hidalgo de la Cruz M, Valsasina P, Sangalli F, et al. Dynamic functional connectivity in the main clinical phenotypes of multiple sclerosis. *Brain Connect* 2021; 11(8): 678–690.
17. Eijlers AJC, Wink AM, Meijer KA, et al. Reduced network dynamics on functional MRI signals cognitive impairment in multiple sclerosis. *Radiology* 2019; 292(2): 449–457.
18. Rocca MA, Hidalgo de La Cruz M, Valsasina P, et al. Two-year dynamic functional network connectivity in clinically isolated syndrome. *Mult Scler* 2020; 26(6): 645–658.
19. Broeders TAA, Douw L, Eijlers AJC, et al. A more unstable resting-state functional network in cognitively declining multiple sclerosis. *Brain Commun* 2022; 4(2): fcac095.
20. Rocca MA, Valsasina P, Meani A, et al. Network damage predicts clinical worsening in multiple sclerosis: A 6.4-year study. *Neurol Neuroimmunol Neuroinflamm* 2021; 8(4): e1006.
21. Kurtzke JF. Rating neurologic impairment in multiple sclerosis: An Expanded Disability Status Scale (EDSS). *Neurology* 1983; 33(11): 1444–1452.
22. Rao SM, Leo GJ, Bernardin L, et al. Cognitive dysfunction in multiple sclerosis. I. frequency, patterns, and prediction. *Neurology* 1991; 41: 685–691.
23. Amato MP, Portaccio E, Goretti B, et al. The Rao's Brief Repeatable Battery and Stroop Test: Normative values with age, education and gender corrections in an Italian population. *Mult Scler* 2006; 12(6): 787–793.
24. Goretti B, Patti F, Cilia S, et al. The Rao's Brief Repeatable Battery version B: Normative values with age, education and gender corrections in an Italian population. *Neurol Sci* 2014; 35(1): 79–82.
25. Dong X, Xu G, Wang J, et al. Clinical and MRI predictors of cognitive decline in patients with relapsing-remitting multiple sclerosis: A 2-year longitudinal study. *Mult Scler Relat Disord* 2022; 65: 103838.
26. Carotenuto A, Valsasina P, Schoonheim MM, et al. Investigating functional network abnormalities and associations with disability in multiple sclerosis. *Neurology* 2022; 99: e2517–e2530.
27. De Rosa AP, Esposito F, Valsasina P, et al. Resting-state functional MRI in multicenter studies on multiple sclerosis: A report on raw data quality and functional connectivity features from the Italian neuroimaging network initiative. *J Neurol* 2023; 270: 1047–1066.
28. Friston KJ, Worsley KJ, Frackowiak RS, et al. Assessing the significance of focal activations using their spatial extent. *Hum Brain Mapp* 1994; 1(3): 210–220.
29. Bommarito G, Tarun A, Farouj Y, et al. Altered anterior default mode network dynamics in

- progressive multiple sclerosis. *Mult Scler* 2022; 28(2): 206–216.
30. Schoonheim MM, Douw L, Broeders TA, et al. The cerebellum and its network: Disrupted static and dynamic functional connectivity patterns and cognitive impairment in multiple sclerosis. *Mult Scler* 2021; 27(13): 2031–2039.
31. Cavanna AE and Trimble MR. The precuneus: A review of its functional anatomy and behavioural correlates. *Brain* 2006; 129(Pt. 3): 564–583.
32. Eijlers AJ, Meijer KA, Wassenaar TM, et al. Increased default-mode network centrality in cognitively impaired multiple sclerosis patients. *Neurology* 2017; 88: 952–960.
33. Cacciaguerra L, Mistri D, Valsasina P, et al. Time-varying connectivity of the precuneus and its association with cognition and depressive symptoms in neuromyelitis optica: A pilot MRI study. *Mult Scler* 2022; 28(13): 2057–2069.
34. Logothetis NK. What we can do and what we cannot do with fMRI. *Nature* 2008; 453: 869–878.
35. Lanciego JL, Luquin N and Obeso JA. Functional neuroanatomy of the basal ganglia. *Cold Spring Harb Perspect Med* 2012; 2: a009621.

Visit SAGE journals online  
[journals.sagepub.com/  
home/msj](https://journals.sagepub.com/home/msj)

 Sage journals