




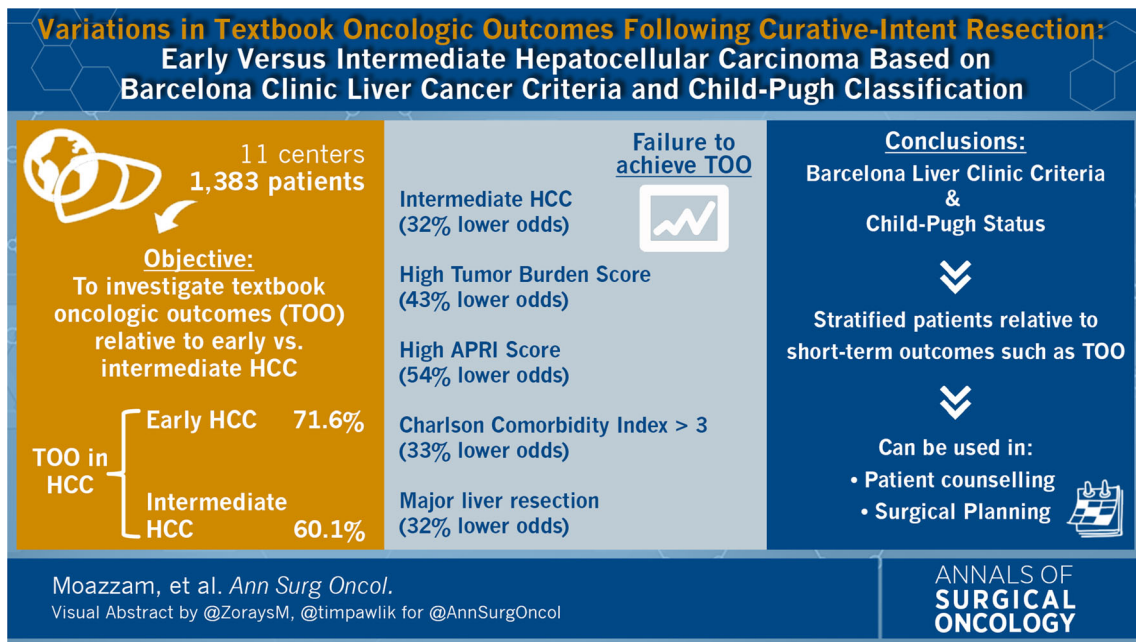
## ASO Visual Abstract: Variations in Textbook Oncologic Outcomes following Curative-Intent Resection: Early versus Intermediate Hepatocellular Carcinoma Based on Barcelona Clinic Liver Cancer Criteria and Child–Pugh Classification

Zorays Moazzam, MBBS<sup>1</sup>, Laura Alaimo, MD<sup>1,2</sup>, Yutaka Endo, MD<sup>1</sup>, Henrique A. Lima, MD<sup>1</sup>, Chanza F. Shaikh, MBBS<sup>1</sup>, Francesca Ratti, MD<sup>3</sup>, Hugo P. Marques, MD<sup>4</sup>, François Cauchy, MD<sup>5</sup>, Vincent Lam, MD<sup>6</sup>, George A. Poultsides, MD<sup>7</sup>, Irinel Popescu, MD<sup>8</sup>, Sorin Alexandrescu, MD<sup>8</sup>, Guillaume Martel<sup>9</sup>, Alfredo Guglielmi, MD<sup>2</sup>, Tom Hugh, MD<sup>10</sup>, Luca Aldrighetti, MD<sup>3</sup>, Itaru Endo, MD<sup>11</sup>, and Timothy M. Pawlik, MD, PhD, MPH, MTS, MBA, FACS, FSSO, FRACS (Hon.)<sup>1</sup> 

<sup>1</sup>Department of Surgery, The Ohio State University Wexner Medical Center and James Comprehensive Cancer Center, Columbus, OH; <sup>2</sup>Department of Surgery, University of Verona, Verona, Italy; <sup>3</sup>Department of Surgery, Ospedale San Raffaele, Milan, Italy; <sup>4</sup>Department of Surgery, Curry Cabral Hospital, Lisbon, Portugal; <sup>5</sup>Department of Hepatobiliopancreatic Surgery, APHP, Beaujon Hospital, Clichy, France; <sup>6</sup>Department of Surgery, Westmead Hospital, Sydney, NSW, Australia; <sup>7</sup>Department of Surgery, Stanford University, Stanford, CA; <sup>8</sup>Department of Surgery, Fundeni Clinical Institute, Bucharest, Romania; <sup>9</sup>Department of Surgery, University of Ottawa, Ottawa, ON, Canada; <sup>10</sup>Department of Surgery, School of Medicine, The University of Sydney, Sydney, NSW, Australia; <sup>11</sup>Yokohama City University School of Medicine, Yokohama, Japan

We investigated differences in the achievement of short-term “optimal” textbook oncologic outcomes (TOO) between early and intermediate hepatocellular

carcinoma (HCC). Of note, patients with intermediate HCC had 32% lower odds of achieving a TOO (<https://doi.org/10.1245/s10434-022-12832-2>).



**Publisher's Note** Springer Nature remains neutral with regard to jurisdictional claims in published maps and institutional affiliations.